

## CONNECTING WITH PRIMARY SOURCES

---

GOAL	Teaching with Primary Sources	<b>Time Required</b> .....
OBJECTIVES	Participants will: <ul style="list-style-type: none"> <li>• Connect with a primary source</li> <li>• Make assumptions based on prior knowledge and close observation</li> <li>• Discuss ways to engage students with primary sources</li> </ul>	45 minutes  <b>Standards</b> ..... AASL 2.1.1 AASL 2.1.3 NETS-T 3c NETS-T 3d
MATERIALS	<b>Materials/Resources Using Primary Sources in the Classroom</b> <ul style="list-style-type: none"> <li><input type="checkbox"/> Discovery of the Mississippi (Hispanic Exploration in America)</li> <li><input type="checkbox"/> The First voyage (Hispanic Exploration in America)</li> <li><input type="checkbox"/> Juan Ponce de Leon (Hispanic Exploration in America)</li> <li><input type="checkbox"/> Provinces of New Spain (Hispanic Exploration in America)</li> <li><input type="checkbox"/> Kauai District, Territory of Hawaii (Japanese American Internment During World War II)</li> <li><input type="checkbox"/> Civilian exclusion order #5 (Japanese American Internment During World War II)</li> <li><input type="checkbox"/> Entrance to Manzanar (Japanese American Internment During World War II)</li> <li><input type="checkbox"/> Naval dispatch from the Commander in Chief Pacific (Japanese American Internment During World War II)</li> <li><input type="checkbox"/> Negro Marines prepare for action (Baseball Across a Divided Society)</li> <li><input type="checkbox"/> President Woodrow Wilson throwing out the first ball (Baseball Across a Divided Society)</li> <li><input type="checkbox"/> Spectators at Pittsburg[h]-Detroit game (Baseball Across a Divided Society)</li> <li><input type="checkbox"/> Spanish-American Base Ball Guide (Baseball Across a Divided Society)</li> <li><input type="checkbox"/> The first Thanksgiving (Thanksgiving)</li> <li><input type="checkbox"/> "Royal Progress", Pilgrim Tercentenary Pageant (Thanksgiving)</li> <li><input type="checkbox"/> Landing of the Pilgrims at Plymouth, 1620 (Thanksgiving)</li> <li><input type="checkbox"/> Thanksgiving, 1942 (Thanksgiving)</li> <li><input type="checkbox"/> Equality League of Self-Supporting Women to Governor of New York (Women's Suffrage)</li> </ul>	

## CONNECTING WITH PRIMARY SOURCES

---

- ☐ National Anti-Suffrage Association (Women's Suffrage)
- ☐ Election Day! (Women's Suffrage)
- ☐ The sky is now her limit (Women's Suffrage)

**PREPARATION** Print as many items as necessary for the group size with at least six-eight extra items. For example, prepare 20 items total for a group of 12-14 participants:

- Four items from Hispanic Exploration in America
- Four items from Japanese Americans Internment During WWII
- Four items from Baseball Across a Divided Society
- Four items from Thanksgiving
- Four items from Women's Suffrage

Be sure to mix the items together before placing them on the table so that the items from each set are separated.

### PROCEDURE

1. Spread items on tables for participants to browse. Ask participants to select one item that appeals to them and take it back to their seats.
2. Ask participants to take a close look at what they have selected and consider what themes or historical time period the item represents or fits.
3. Ask participants to get up and move around the room, comparing their item with others' and looking for other items of a similar theme or time period. Participants should form groups based on the common theme or time period of their primary sources.
4. If anybody appears "lost," ask the groups to listen to that person describe his or her item. Groups can invite this person to join them, briefly explaining their rationale for why the item fits with their group.
5. Once all groups are formed, ask them to create a title for their group:  
The Great Depression, Founding Documents...etc.
6. Groups will report by showing their items. One person will describe the process they used to discover how they belong together.
7. (OPTIONAL) If this is an activity at the beginning of a workshop, the participants may also introduce themselves and tell why they

Teaching with Primary Sources • Professional Development

## CONNECTING WITH PRIMARY SOURCES

---

selected their item and how it might be relevant in their teaching.

**ASSESSMENT** Discussion in small or large groups: How could you relate this set of materials to events happening in the world today? How could these materials help develop connections for students in your classroom?

Teaching with Primary Sources • Professional Development

# CONNECTING WITH PRIMARY SOURCES

There are 20 resources for this activity...



## Discovery of the Mississippi (Hispanic Exploration in America)

Discovery of the Mississippi: By Ferdinand De Soto, and his followers, May 1541

<http://loc.gov/pictures/item/91795960/>



## The First voyage (Hispanic Exploration in America)

The First voyage

<http://loc.gov/pictures/item/91721172/>



## Juan Ponce de Leon (Hispanic Exploration in America)

Juan Ponce de Leon; Portrait, head and shoulders, facing left.

<http://loc.gov/pictures/item/2004672795/>



## Provinces of New Spain (Hispanic Exploration in America)

A map of the Internal Provinces of New Spain.

<http://hdl.loc.gov/loc.gmd/g4295.np000060>

(4 pages)



## Kauai District, Territory of Hawaii (Japanese American Internment During World War II)

Kauai District, Territory of Hawaii. Major Charles V. McManus administering the oath to four AJA volunteers.

<http://loc.gov/pictures/item/owi2001046268/PP/>



## Civilian exclusion order #5 (Japanese American Internment During World War II)

Civilian exclusion order #5, posted at First and Front streets, directing removal by April 7 of persons of Japanese ancestry, from the first San Francisco section to be affected by evacuation.

<http://loc.gov/pictures/item/2001705937/>

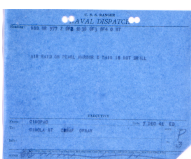
# CONNECTING WITH PRIMARY SOURCES



## Entrance to Manzanar (Japanese American Internment During World War II)

Entrance to Manzanar, Manzanar Relocation Center / photograph by Ansel Adams.

<http://loc.gov/pictures/item/2002695960/>



## Naval dispatch from the Commander in Chief Pacific (Japanese American Internment During World War II)

Naval dispatch from the Commander in Chief Pacific (CINCPAC) announcing the Japanese attack on Pearl Harbor, 7 December 1941.

<http://memory.loc.gov/cgi-bin/ampage?collId=mcc&fileName=002/page.db&recNum=0>



## Negro Marines prepare for action (Baseball Across a Divided Society)

Negro Marines prepare for action. Breaking a tradition of 167 years, the U.S. Marine Corps started enlisting Negroes on June 1, 1942.

<http://loc.gov/pictures/item/owi2001024282/PP/>



## President Woodrow Wilson throwing out the first ball (Baseball Across a Divided Society)

[President Woodrow Wilson throwing out the first ball, opening day, 1916]

<http://loc.gov/pictures/item/97518727/>



## Spectators at Pittsburg[h]-Detroit game (Baseball Across a Divided Society)

Photographs shows spectators in Pittsburgh who have climbed on a tall pole to observe the baseball game, other people in foreground.

<http://loc.gov/pictures/item/91784621/>



## Spanish-American Base Ball Guide (Baseball Across a Divided Society)

[Cover of the Spanish-American edition of "Spalding's Official Base Ball Guide"]

<http://loc.gov/pictures/item/97519068/>



## The first Thanksgiving (Thanksgiving)

The first Thanksgiving 1621 / J.L.G. Ferris.

<http://loc.gov/pictures/item/2001699850/>

# CONNECTING WITH PRIMARY SOURCES



## "Royal Progress", Pilgrim Tercentenary Pageant (Thanksgiving)

"Royal Progress", Pilgrim Tercentenary Pageant, Plymouth, Mass., 1921.

<http://loc.gov/pictures/item/2007663439/>



## Landing of the Pilgrims at Plymouth, 1620 (Thanksgiving)

Landing of the pilgrims at Plymouth 11th Dec. 1620

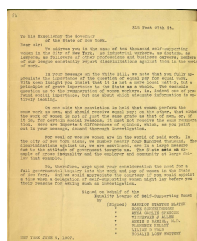
<http://loc.gov/pictures/item/95503144/>



## Thanksgiving, 1942 (Thanksgiving)

Thanksgiving, 1942. Turkey, pumpkin pie, cranberry sauce, sweet potatoes--nothing is too good for Uncle Sam's fighting nephews when they come home to Silver Spring, Maryland.

<http://loc.gov/pictures/item/oem2002005338/PP/>



## Equality League of Self-Supporting Women to Governor of New York (Women's Suffrage)

Equality League of Self-Supporting Women request state investigation of working conditions and pay of women.

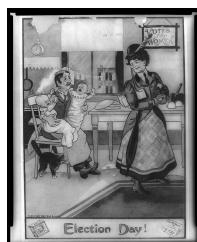
<http://hdl.loc.gov/loc.rbc/rbcmil.scrp3007601>



## National Anti-Suffrage Association (Women's Suffrage)

Men looking in the window of the National Anti-Suffrage Association headquarters.

[http://memory.loc.gov/cgi-bin/query/r?ammem/suffrg:@field\(NUMBER+@band\(cph+3a26270\)\)](http://memory.loc.gov/cgi-bin/query/r?ammem/suffrg:@field(NUMBER+@band(cph+3a26270)))



## Election Day! (Women's Suffrage)

Election Day!. c1909.

[http://memory.loc.gov/cgi-bin/query/r?ammem/suffrg:@field\(NUMBER+@band\(cph+3a51845\)\)](http://memory.loc.gov/cgi-bin/query/r?ammem/suffrg:@field(NUMBER+@band(cph+3a51845)))



## The sky is now her limit (Women's Suffrage)

[The sky is now her limit] / Bushnell.

<http://loc.gov/pictures/item/2002716769/>





PUBLISHED BY CURRIER & IVES

Copyright 1876, by Currier & Ives, N.Y.

125 NASSAU ST. NEW YORK

## THE DISCOVERY OF THE MISSISSIPPI.

By Ferdinand De Soto, and his followers, May 1541.

5C-435  
LC-USZ62-3435





### THE FIRST VOYAGE.

Columbus obtained his commission to sail from Palos through the intercession of the Franciscan monk, Juan Perez de Marchena. His commission gave him the title of Don, and raised him to the rank of Grand Admiral of the Ocean Seas. He sailed Friday, August 3, 1492, with three small caravels, named the "Pinta," the "Nina," and the "Santa Maria," which latter he commanded in person, accompanied, besides his crew and sailors, by soldiers and two monks.

Published by THE PRANG EDUCATIONAL CO., Boston, U. S. A.





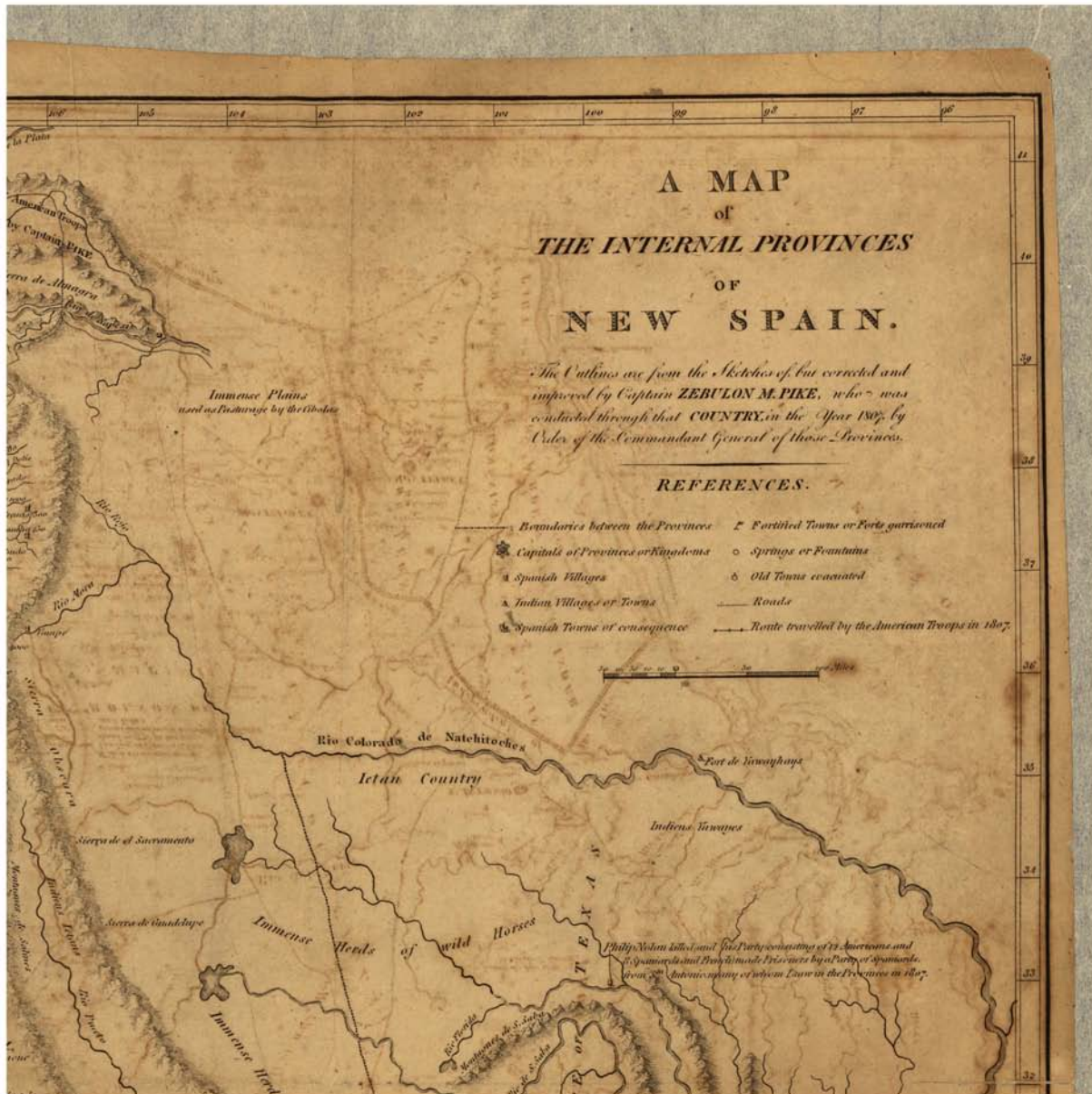
Ponce de Leon.

## Capitel VIII.

Florida.







<http://hdl.loc.gov/loc.gmd/g4295.np000060>  
The Library of Congress

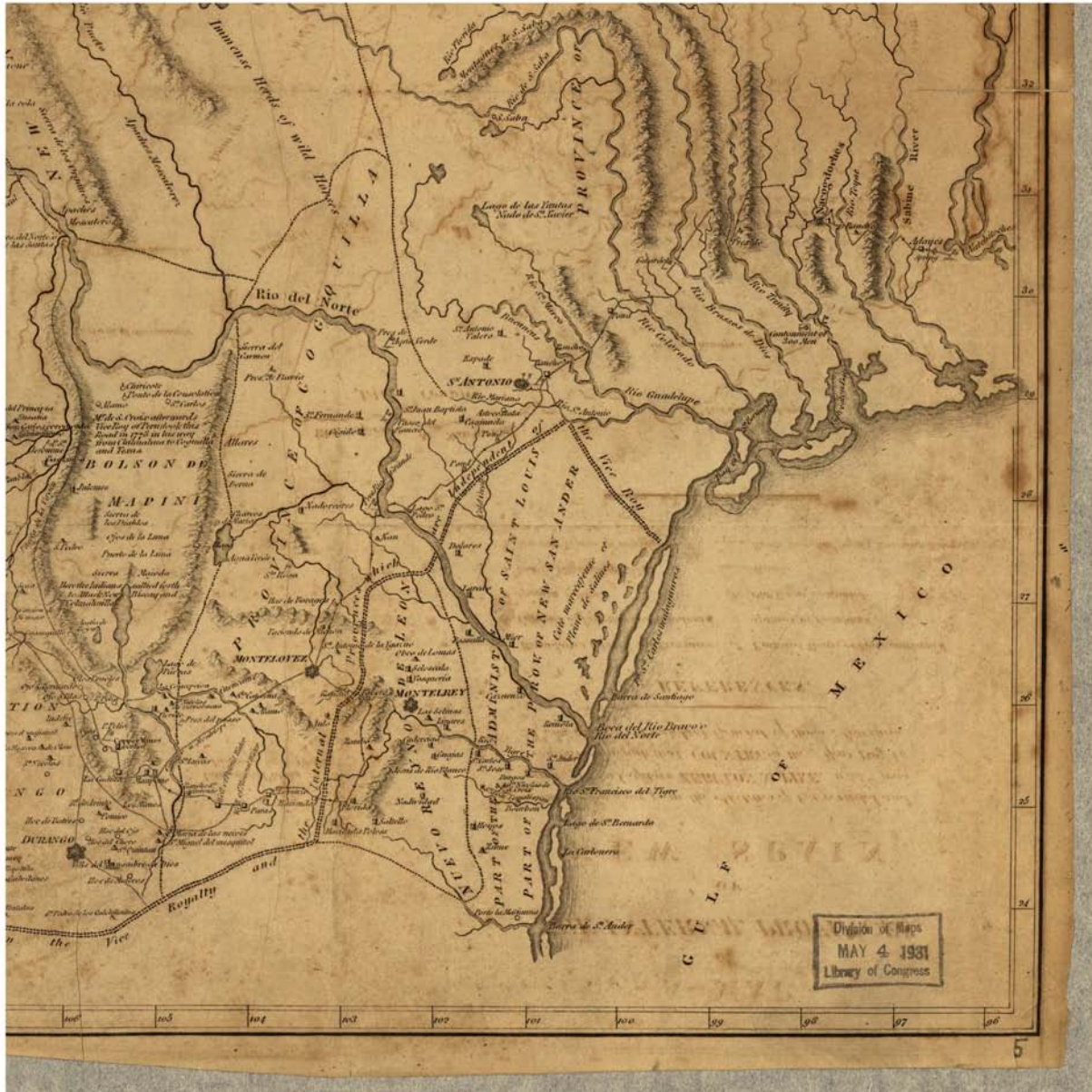
<http://www.loc.gov>



<http://hdl.loc.gov/loc.gmd/g4295.np000060>  
The Library of Congress

<http://www.loc.gov>





<http://hdl.loc.gov/loc.gmd/g4295.np000060>  
The Library of Congress

<http://www.loc.gov>











U. S. S. RANGER  
NAVAL DISPATCH

Heading: NSS NR 977 Z 0F2 1830 0F3 0F4 0 BT

AIR RAID ON PEARL HARBOR X THIS IS NOT DRILL

EXECUTIVE

From:	CINCPAC	Date	7 DEC 41	ED
To:	CINCLA NT	COMAF	OPNAV	SUPR CWD
Info:		No.	37	
	<input checked="" type="checkbox"/> Capt <input checked="" type="checkbox"/> Exec <input checked="" type="checkbox"/> CDO <input checked="" type="checkbox"/> Nav <input checked="" type="checkbox"/> Air <input checked="" type="checkbox"/> Asst <input checked="" type="checkbox"/> Gun <input checked="" type="checkbox"/> Eng <input checked="" type="checkbox"/> Com <input checked="" type="checkbox"/> Med <input checked="" type="checkbox"/> Sup <input checked="" type="checkbox"/> Disb <input checked="" type="checkbox"/> Chap <input checked="" type="checkbox"/> Mar <input checked="" type="checkbox"/> Aero <input checked="" type="checkbox"/> Ath <input checked="" type="checkbox"/> COF <input checked="" type="checkbox"/> EOR <input checked="" type="checkbox"/> OOD <input checked="" type="checkbox"/> Cras <input checked="" type="checkbox"/> VF4 <input checked="" type="checkbox"/> VB4 <input checked="" type="checkbox"/> VS41 <input checked="" type="checkbox"/> VS42			
ACTION	<i>[Handwritten signature]</i>			
INFO				









Opening game 1916. Ex 112  
LC-USZ62-9981

SPECTATORS AT PITTSBURG--  
DETROIT GAME.





1913

# SPALDING'S



"Official National League"  
PATENT CORK CENTER



SPALDING'S OFFICIAL NATIONAL LEAGUE No. 1  
Cork Center

BEWARE OF COUNTERFEITS  
The Only Genuine Official League Ball  
as adopted and used by  
The National League  
of Professional Base Ball Clubs since  
1878. See the signature on each label  
*A. G. Spalding*

THE OFFICIAL BALL OF THE  
GAME SINCE ITS ADOPTION BY  
THE NATIONAL LEAGUE IN 1878

## OFFICIAL LEAGUE BALL

Used exclusively by National League, majority of Minor Leagues,  
and by all Intercollegiate and other Associations for the past  
thirty-six years.

**A. G. SPALDING & BROS.**

SPALDING'S OFFICIAL BASE BALL GUIDE 1913.

Group I., No. 1 MARCH, 1913

**SPANISH-AMERICAN EDITION**


# SPALDING'S

OFFICIAL

ATHLETIC LIBRARY

## BASE BALL

# GUIDE



1913

PUBLISHED BY  
**AMERICAN SPORTS PUBLISHING CO.,**  
21 Warren Street, New York City.



Kodak Epy 6531



© THE FOUNDATION PRESS, INC.  
CLEVELAND, OHIO







LANDING OF THE PILGRIMS AT PLYMOUTH 11<sup>th</sup> DEC. 1620.

*Lith. & Pub. by N. Currier, 2, Spruce St. N.Y.*



D-6813



315 West 97th St.

To his Excellency the Governor  
of the State of New York.

Dear sir:

We address you in the name of ten thousand self-supporting women in the City of New York. As industrial workers, as doctors, as lawyers, as followers of other professions and business careers, members of our league constantly report discriminations against them in the world of work.

In your message on the White Bill, we note that you fully appreciate the importance of the question of equal pay for equal work. With keen insight you insist that it is not a mere local matter, but a principle of grave importance to the State as a whole. The economic question as to the remuneration of women workers, is, indeed one of profound social importance, but one about which adequate information is entirely lacking.

On one side the conviction is held that women perform the same work as men, and should receive equal pay; on the other, that either the work of women is not of just the same grade as that of men, or, if it is, for certain social reasons, it must not receive the same remuneration. Here are important differences of opinion, which, as you point out in your message, demand thorough investigation.

For weal or woe we women are in the world of paid work. In the city of New York alone, we number nearly four hundred thousand. The discriminations against us, we are convinced, are in a large measure due to the attitude of government towards us. The State sets an example of gross inequality and the employer and community at large follow that example.

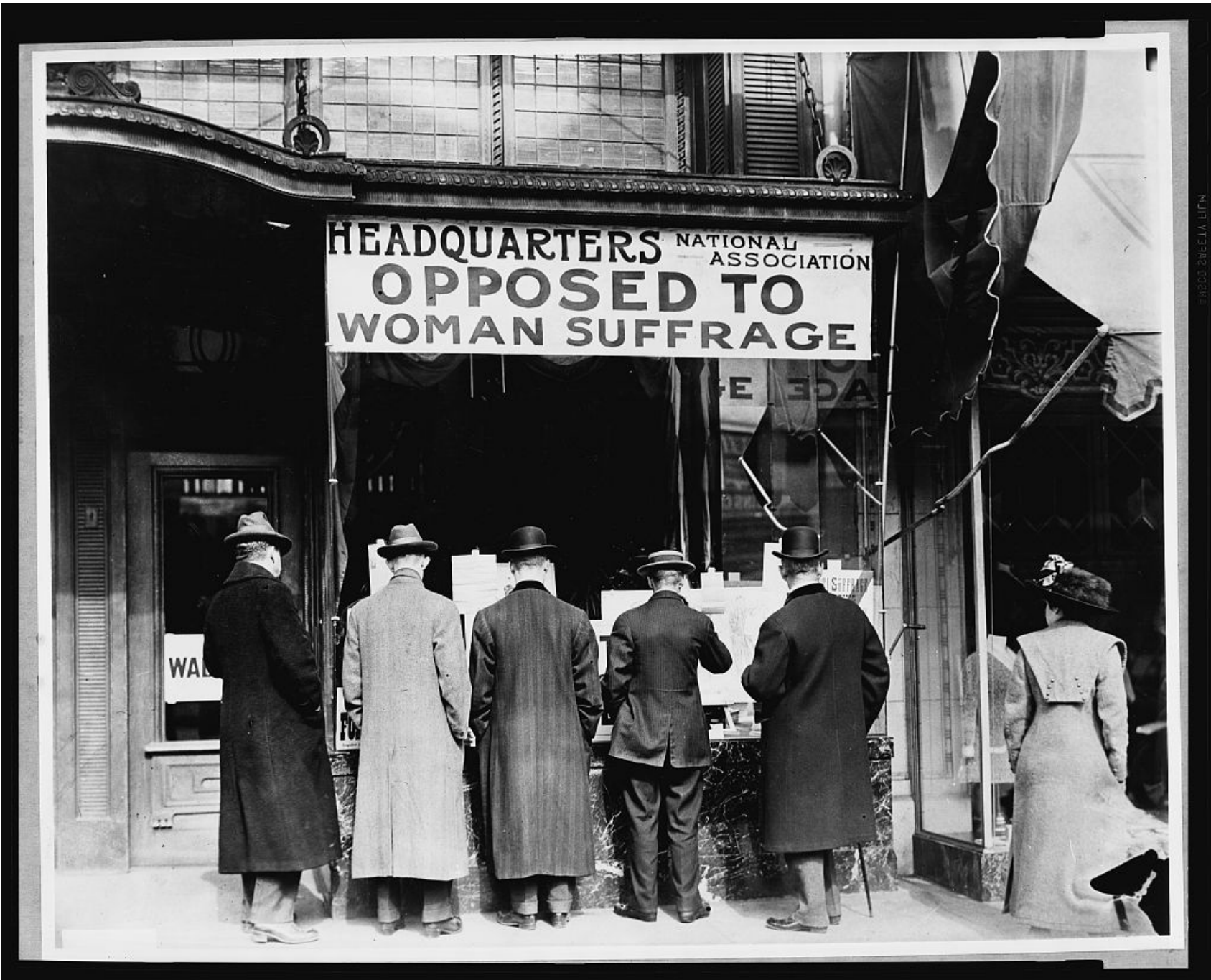
We, therefore, urge upon your consideration the need for a full governmental inquiry into the work and pay of women in the State of New York. And we would appreciate the courtesy if you would appoint a time when a delegation of self-supporting women might lay before you their reasons for asking such an investigation.

Signed on behalf of the  
Equality League of Self-Supporting Women  
by

(Signed)	HARRIOT STANTON BLATCH
"	ROSE SCHNEIDERMAN
"	ANNA GARLIN SPENCER
"	WINNEFRED J ALLEN
"	ANNIE S DANIEL. M.D.
"	FLORENCE KELLEY
"	LILIAN D WALD
"	ROSALIE LOEW WHITNEY

NEW YORK JUNE 8, 1907.





MLJ1 V13P42.002018





